

# PROSPECTUS 2024



**Cork College of FET**

Cork's Further Education & Training Service



TRAMORE ROAD CAMPUS | MORRISON'S ISLAND CAMPUS  
DOUGLAS STREET CAMPUS | MALLOW CAMPUS | KINSALE CAMPUS  
WEST CORK CAMPUS | BISHOPSTOWN CAMPUS

Visit [www.corketb.ie/fet](http://www.corketb.ie/fet)





## Cork ETB Foreword

I am delighted to welcome you to Cork College of FET's Prospectus for 2024. This year's prospectus underlines the efforts that Cork Education and Training Board (CETB) is making to develop Cork College of FET (CCFET) to ensure that learners are provided with the best education and training opportunities in the region to prepare them for the future.

This year's prospectus describes the courses on offer under CCFET's new Department structure, a structure that underpins the ambition of CCFET to build a centres of excellence and opportunity, offering courses that are innovative, responsive, and inclusive, and prepare participants for the world of work, further studies and life as citizens of the world.

In this year's prospectus you will see some courses that were previously associated with one of our campuses moving to new locations as part of this College and Departmental configuration, and this will continue on a phased basis over the coming years. While this is a significant change for us in Cork ETB and CCFET, you can be guaranteed that one underpinning principal of Cork College of FET remains constant, our commitment to providing a high-quality learner experience that remains focussed on Cork ETB's vision to create a pathway for every learner.

In CCFET we recognise that the world we live in is changing and evolving constantly, and that the pace of change is increasing. The impacts of digitalisation, artificial intelligence, as well as the need to embed sustainability within all aspects of our lives are influences that are shaping our courses and approaches. Our courses and our approaches are changing to meet these demands and ensure that our graduates are prepared for the challenges and opportunities of the future.

Our courses are recognised and certified by nationally and internationally recognised awarding bodies, with graduates highly valued by employers and with direct access links from many courses into Higher Education courses in Universities and Institutes of Technology, both in Ireland and abroad.

Learners engaging with our FET programmes reflect the fullness of Irish society, in terms of age, experience, gender, ethnicity and so much more. Participation on a Cork College of FET programme is designed to develop the skills, knowledge and understanding of the individual in an environment that is supportive and encouraging, where differences and diversity are recognised and respected. School leavers, mature learners, learners with a disability and learners who have come to Ireland to make it their home are welcomed, supported, and encouraged to participate and engage with these programmes.

Within the diversity of programmes presented in this prospectus, I am sure that you will find something that will provide you with the foundation and impetus to take the next step in your learning journey, and that you will enjoy an experience built on our commitment to high quality teaching and learning in a supportive environment that will expand your horizons and provide new opportunities for your future.

**John Fitzgibbons**

*Director of Further Education and Training  
Cork Education and Training Board*

*Note: Cork Education and Training Board and Cork College of FET reserve the right to restructure or cancel any course without notice. This prospectus does not infer or impose any legal obligation on the Cork Education and Training Board or Cork College of FET to provide courses or other services to students.*





## DISCLAIMER

Cork College of FET reserves the right to restructure or cancel any course without notice. This prospectus does not infer or impose any legal obligation on the Cork Education and Training Board or the College campus to provide courses or other services to students.

Applications for a place on a course listed in this prospectus is not through the Central Applications Office (CAO) i.e. points are not required. Admission to a particular course is subject to places being available on the course and the following criteria being satisfied:

- That an applicant's previous education, training or experience, indicates that they are likely to benefit from participation in the course and be able to successfully engage with, and complete, the course.
- That an applicant attends for interview and is considered suitable for the course based on their presentation at interview.
- The participation of the applicant on the course will contribute positively to the course and will not impact negatively on the rights of other students or staff.

All applicants must normally be 18 years of age or older, on the commencement of the course. In general, applicants for Level 5 courses should have usually completed the Leaving Certificate, the Leaving Certificate Applied or their equivalents. The suitability of mature students will be based on their experience as well as any formal education qualifications.

Places on Level 6 courses generally require that applicants have successfully completed a full Level 5 programme in a cognate area. In some instances, the Level 5 requirements for entry are specific to that course (see each course listing).

Places on courses are limited and early application is advisable.

## HOW TO APPLY

### STEP 1: BEFORE YOU START, YOU WILL NEED

- Access to an email account
- Your PPSN number
- Your Eircode
- Your Medical Card number (if applicable)

Click here to Apply

<https://eduportal.enrol.ie/>

When you apply online you will receive a personal account and ID, this will enable you to view all correspondence in relation to your application.

Please note, you will be required to update your account with additional information if you are offered a place on a course that you wish to accept.

### STEP 2: ATTEND FOR INTERVIEW

Applicants will be notified to attend for interview at the College campus and must bring the following when attending:

- A copy of Leaving Certificate Results or equivalent (if applicable)
- A signed passport sized photograph
- A copy of your birth certificate
- Proof of PPSN

Interviews are held a number of times per year from Springtime through to course commencement. The interview simply acts to match the applicant against the course in terms of suitability, commitment and expectation.

An offer of a place is contingent on the applicant meeting the entry requirements of the course and satisfactory presentation at interview.

### STEP 3: PLACE OFFER AND ACCEPTANCE

Successful applicants will be notified of the offer of a place on a college course by post and by e-mail. To secure this place, applicants must pay the relevant Course Fee before a set date, as indicated in the communication of the offer. You will be required to update the personal account you created on application with additional information if you wish to accept the offer of a place. Failure to do so may result in the place being forfeited and offered to another applicant.

### STEP 4: REGISTRATION AND INDUCTION

Students offered a place on a course will also receive notification of the dates they must attend for registration and induction. All students must attend the College campus on these designated dates.

### STEP 5: FOR STUDENTS WHOSE FIRST LANGUAGE IS NOT ENGLISH

For students whose first language is not English, you will also be advised at the time of offer of the date and time to attend for the compulsory English Language Assessment.

## INCLUSIVITY

Cork College of FET fosters a positive culture where every member of the college community has the right to be treated with courtesy, dignity and respect irrespective of disability, gender, age, religion, civil status, race, sexual orientation, family background or membership of the travelling community. Cork College of FET recognises the very serious nature of discrimination and the negative impact that it can have on the lives of students and staff. As a college community we are fully committed to preventing and tackling intolerant behaviour. Cork College of FET is an inclusive environment, welcoming of difference and diversity while promoting respectful relationships throughout the establishment.

## STUDENTS WITH DISABILITIES AND SPECIFIC LEARNING NEEDS

Cork College of FET is committed to a policy of equal opportunity and welcomes applications from students with physical disabilities and specific learning needs. The College is committed to providing appropriate supports and assistance for such students, within the limits of available resources.

Applicants with disabilities should contact the Campus support service for further information and advice.

## INTERNATIONAL STUDENTS

Cork College of FET welcomes applications from eligible international students. It is the responsibility of the applicant to ensure that they meet Immigration and Visa requirements prior to applying for a place on a course. Post Leaving Certificate courses DO NOT feature on the Interim List of Eligible Programmes which lists the courses for which an overseas, non-EU/EEA applicant may apply for a study visa to enter the country.

Applications from citizens of EU/EEA countries are not liable for tuition fees, however other course fees may apply.

To qualify for free tuition fees, you must meet criteria with regard to:

1. Residence and
2. Nationality and immigration status
3. Course requirements

### 1. RESIDENCE

You must have been living in an EEA member state or Switzerland for at least 3 of the 5 years before starting your course. The members of the EEA (the European Economic Area) are the member states of the EU, along with Iceland, Norway and Liechtenstein.

UK nationals are treated as EU applicants under the agreed arrangements between Ireland and the United Kingdom.

## 2. NATIONALITY AND IMMIGRATION

You must also fulfil one of the following 6 criteria as regards nationality and immigration status in Ireland:

You must:

- Be a citizen of an EEA member state (see above) or Switzerland or the UK or
- Have official refugee status or
- Be a family member of a refugee and have been granted permission to live in the State or
- Be a family member of an EU national and have permission to live in the State, with a stamp "4EUFAM" on your residence card or
- Have been granted humanitarian leave to remain in the State or
- Have been granted permission to remain in the State by the Minister for Justice and Equality, following a determination by the Minister not to make a deportation order under Section 3 of the Immigration Act 1999.

All other eligible international applications are subject to tuition fees of €3,653.

Applications from individuals in the process of seeking "leave to remain" are welcomed. Applications from individuals in this category should note that the decision of the Irish Government to implement the EU Receptions Conditions Directive (2013/22/EU) may provide for their acceptance onto a PLC course, subject to them having received permission from the Minister for Justice to enter the labour market. More information on these conditions and supports are available from each campus.

**Applicants from outside of the State who are not EU/UK/EEA citizens, should note that Post Leaving Certificate courses are not eligible to obtain a study visa to enter the state.**

## FINANCIAL INFORMATION AND ADVICE

### COURSE FEES

Courses in the college are funded by the Department of Further and Higher Education, Research Innovation and Skills (DFHERIS) and SOLAS (the Further Education and Training Authority, with support from the European Social Fund. There are no tuition fees for PLC courses for EU/UK/EEA students.

In previous years, courses attracted additional charges for materials and services. In budget 2024, the Government announced the removal of fees for PLC courses. The details and arrangements for the removal of fees are being finalised by SOLAS and the Department and will be communicated to applicants as soon as they are issued.



Some courses require students to obtain specific items that remain the student's property on completion of the course, e.g. student's kits and uniforms, manuals etc. Details of these costs will be communicated as soon as the arrangements for the removal of course fees is communicated by SOLAS. In an instance where course items will remain the property of the student, the costs associated any such items apply to all students.

Full details of all fees, if any, will be available at the individual campus fee web page:

[Course Fees Morrisons Island Campus](#)

[Course Fees Douglas Street Campus](#)

[Course Fees Mallow/Charleville Campus](#)

[Course Fees Kinsale Campus](#)

[Course Fees Tramore Road Campus](#)

## MAINTENANCE GRANT (SUSI)

Learners attending full-time Further Education PLC courses may be eligible for a means-tested maintenance grant. Information regarding eligibility and application details is available at [www.susi.ie](http://www.susi.ie)

## RECOGNITION OF PRIOR LEARNING (RPL)

Cork College of FET understands that learning takes place throughout life and in many settings, such as work or voluntary activities, sporting and participation in community events. We also know that learners may dip in and out of formal education throughout a lifetime depending on their needs. Recognition of Prior Learning (RPL) is when formal recognition is given for the learning you have already achieved prior to starting on a course. Relevant prior learning may allow a learner to gain accreditation for a component award that forms part of a programme of study. Cork College of FET provides support to learners to apply for RPL. RPL is available for certain component awards in Cork College of FET. If you feel that RPL may be relevant to you, please contact the campus where you intend to study to discuss further.

## VOCATIONAL TRAINING OPPORTUNITIES SCHEME – VTOS

The Vocational Training Opportunities Scheme (VTOS) provides a range of supports to allow individuals who are unemployed to return to education or training. The scheme allows successful applicants to keep their Social Welfare Allowances while attending their course in the college. All full-time day courses in each campus are eligible for VTOS.

Applicants must be in receipt of one of these qualifying payments immediately before starting the scheme:

- Jobseekers Allowance or Jobseekers Benefit
- Jobseekers Transitional
- One Parent Family Allowance
- Blind Pension
- Deserted Wife's Allowance; Widow's, Widower's or Surviving Civil Partner's Contributory Pension; Widower's or Surviving Civil Partner's Non-Contributory Pension
- Prisoner's Spouse Allowance
- An Adult Dependent on a person in receipt of Unemployment Assistance
- Disability Allowance

- Illness Benefit (you must apply to the **Exemption Section, Dept of Social, Community & Family Affairs, Store St. Dublin 1** for an exemption to attend the course)

Places are **LIMITED** on the VTOS programme and are prioritised on the basis of:

- Educational need
- Period of time in receipt of Social Welfare payments

To apply for VTOS:

1. Complete the Cork College of FET Enrolment Procedure as above.
2. A VTOS application form is also filled out with a passport size photograph included. Do NOT complete the back page of the form.
3. Return the form to the campus VTOS Office.
4. The closing date for receipt of VTOS applications forms is September 8<sup>th</sup> 2024. Application Forms received after this date will be treated as a late application.

Further information and enquiries regarding VTOS should be made to the campus VTOS contact person.

## BACK TO EDUCATION ALLOWANCE- BTEA

The Back to Education Allowance (BTEA) is a scheme for unemployed people, lone parents and people with disabilities who are getting certain payments from the Department of Social Protection (DSP). DSP are the decision makers in relation to who will be awarded BTEA.

The allowance can be paid to people who wish to undertake approved second or third level courses of education. BTEA is not an unemployment payment. This weekly allowance is means tested and while you can work part-time during the academic year, any income from part time work is assessed under the rules (means assessment) that apply to your primary payment - that is the payment from which you qualified for BTEA.

Any full-time day course provided by the Cork College of FET is eligible for BTEA as long as the applicant is progressing their level of education qualification i.e. if an applicant has a Level 5 qualification on the National Framework of Qualifications (NFQ) they must generally undertake a course that leads to a Level 6 qualification at least.

Further Information is available at <https://www.citizensinformation.ie/en/social-welfare/back-to-education/back-to-education-allowance/> or [www.studentfinance.ie](http://www.studentfinance.ie)

## GARDA VETTING

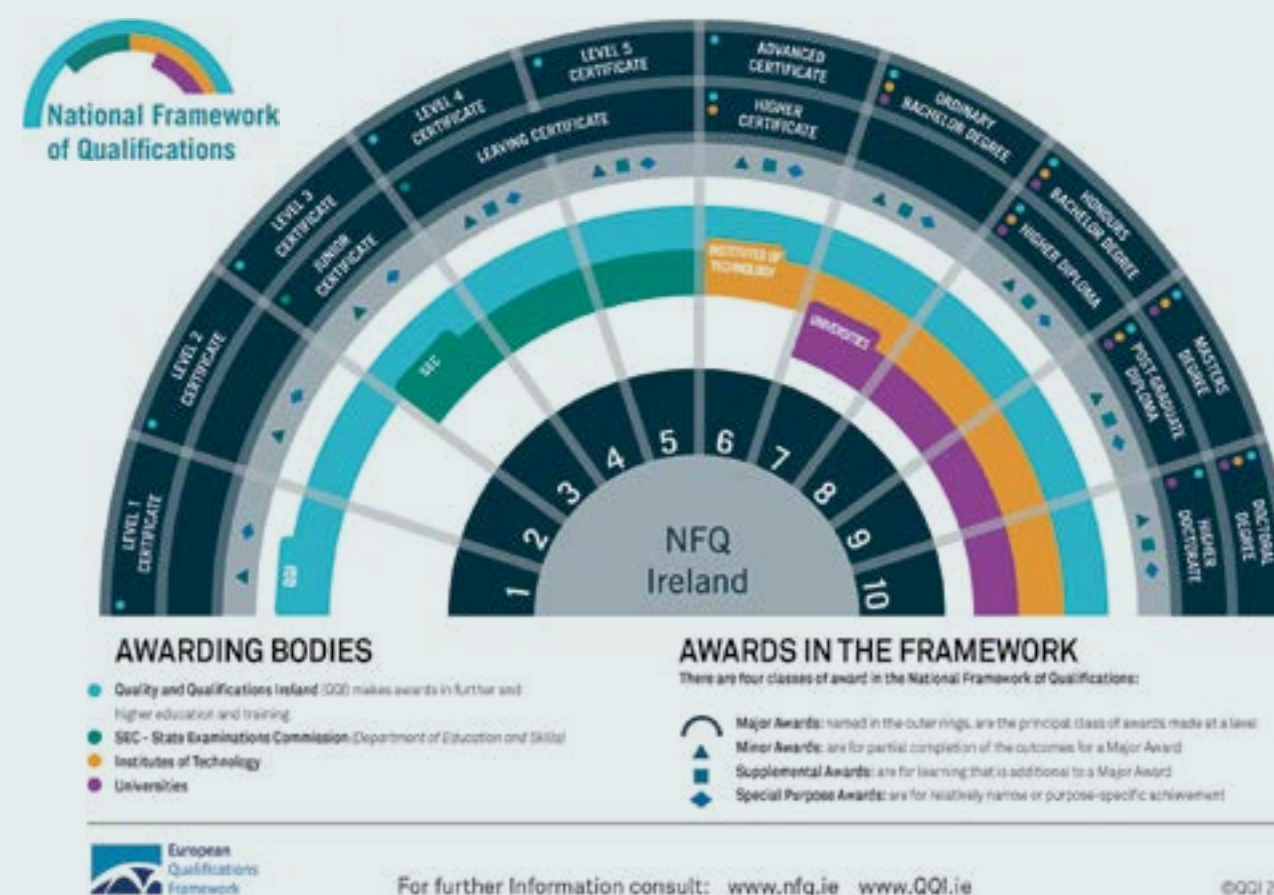
Garda Vetting is compulsory for all students attending courses where interaction with children or vulnerable adults is a feature of the course. Applicants who have been offered a place on these courses will be required to submit a Garda Vetting application prior to their commencement on the course. You will be advised at interview if your course requires Garda vetting.

## A GUIDE TO CERTIFICATION AND ASSESSMENT

The National Framework of Qualifications (NFQ) is the ten-level system (1-10) giving an academic or vocational value to the qualifications obtained in Ireland. The NFQ levels help to indicate how an award can be used for training, education, and employment opportunities, and allows for a comparisons and equivalencies to be drawn between different awards, courses and programmes

The diagram below shows a "fan" representation of the National Framework of Qualifications.

Quality and Qualification Ireland (QQI) is responsible for maintaining the NFQ and is the regulatory body for external quality assurance in further and higher education.



The majority of courses offered in Cork College of FET are accredited at QQI Level 5 and Level 6. Some courses have accreditation from other awarding bodies. The NFQ allows for this accreditation to be given an equivalency within the framework that is clearly understood by students and employers.

Courses are funded by the Irish Government and supported by the European Union.



Rialtas na hÉireann  
Government of Ireland



Arna chomhchistiú ag an Aontas Eorpach  
Co-Funded by the European Union



QQI  
Quality and Qualifications Ireland  
Dearbhú Cáilíochta agus Cáilíochtaí Éireann



The project is co-funded by the Government of Ireland and the European Union.





## TRAMORE ROAD CAMPUS

- Tramore Road Campus is open to students of all ages and abilities, including mature students, to avail of our state-of-the-art learning facilities
- We understand that choosing the right course can be a difficult decision and we are available to provide further advice and support
- Such support and encouragement will be with you throughout your time at Tramore Road Campus
- We offer sports courses, digital media, art, journalism, culture and heritage and furniture design and many more courses also
- We will be with you on every step of this new adventure



## WEST CORK CAMPUS

- The West Cork Campus provides a wide range of accredited courses at QQI Level 5 that are delivered in a student-focused and supportive learning environment
- Highly experienced tutors & excellent resources
- Work Experience placement that gives students the opportunity to gain valuable application of their skills
- The Campus has extensive and very valuable progression links
- Further Education courses are for everyone - post-leaving cert students, mature students and individuals who want to make a career change or pursue further study, building your confidence & skills to reach your potential!



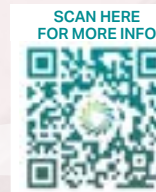
## MALLOW CAMPUS

- Just finished school? Looking to begin your career? Returning to education? Mallow Campus is the ideal choice to begin this next chapter of your journey...
- Wide array of courses and a vibrant, inclusive learning environment which can provide you with the qualifications you need
  - Wide range of progression routes: If your Leaving Cert results weren't exactly what you needed, you still have options
  - Mallow Campus is on the rail and bus route as well as offering free parking, the local link connects Duhallow, Fermoy, and Mitchelstown to Mallow Campus each morning
  - Courses offered in our Charleville Centre also



## MORRISON'S ISLAND CAMPUS

- Fabulous city centre location close to all travel routes
- Huge range of accredited courses with field trips, site visits, workshops included
- Dedicated progressions database on our campus website
- Excellent connection to industry with our Jobs Hub, employment register, industry mentors, volunteer fairs, recruitment fair etc
- Dedicated work experience coordinators
- Inclusive ethos and excellent supports for all
- JAM friendly location with all staff trained
- International student cohort contributes to a very special campus culture
- Campus student app for keeping our campus community up to date
- Courses offered in our other County locations also
  - Macroom Centre
  - Youghal Campus
  - West Cork Campus



## KINSALE CAMPUS

- Inclusive campus renowned for its supportive environment for students
- Learning needs and support is tailored - school leavers to mature adults
- Excellent Progression links
- Innovative teaching practices embedded in Universal Design for Learning (UDL)
- First Green Campus of Further Education in Munster
- Winner of the John Kelly Award from AHEAD for UDL
- Home of the world's first permaculture course and Transition Town Movement
- Nationally and International recognized for our promotion of sustainable horticulture, agroforestry and biodiversity
- Located on the gateway to the Wild Atlantic Way
- Entrepreneurship programmes



## BISHOPSTOWN CAMPUS

- Bishopstown Campus delivers an extensive range of training to a diverse range of clients.
- Courses are designed to meet the needs of identified industries
  - There are three locations - Main Campus, Life Sciences Centre in Carrigaline and Westside Hospitality Centre
  - Easily accessible campuses on main bus routes
  - Specific skills programmes and traineeships run across all locations and vary from 3 days for barista training to 12 months for traineeships
  - High engagement with local industry to ensure programmes are relevant
  - Prime focus is ensuring learners succeed in their chosen career path



## Cork College of FET

Cork's Further Education & Training Service

Our commitment through Cork College of FET is to build on the proud traditions of the different centres and campuses, to support every learner on their learning journey, and contribute to the social and economic development of the region.



## DOUGLAS STREET CAMPUS

- Committed to ensuring students excel in their chosen programme
- Excellent student supports services to meet individual needs
- Modern, friendly and innovative learning experience
- Access to top-class industry standard facilities
- Apple Regional Training Centre - the only FE Campus in Ireland to be recognised as such
- Strong links with employers and local industry
- Students have access to work placement
- Highly successful EU work placement programme
- Partnerships with local, national and international Universities and Institutes
- Opportunities for all students - take a look and choose the course that suits your needs



7 CAMPUSES

4,000+ STUDENTS

1 COLLEGE

200+ COURSES

1 COUNTY

1 VISION





# List of Departments:

- APPRENTICESHIPS**.....10
- APPLIED SCIENCES**..... 11
- ART, CRAFT & DESIGN** .....12
- BUSINESS ADMINISTRATION**..... 14
- COMPUTER SCIENCE & INFORMATION** .....17
- CREATIVE MEDIA TECHNOLOGY**..... 18
- ENGINEERING & CONSTRUCTION** .....19
- ENVIRONMENT & HORTICULTURE** .....20
- HAIR, BEAUTY & COMPLEMENTARY THERAPIES** ..... 21
- HEALTH, CHILDREN & SOCIAL STUDIES** ..... 22
- PERFORMING ARTS** .....26
- SPORTS, RECREATION & OUTDOOR EDUCATION** ..... 27
- TOURISM & HOSPITALITY** .....28



COURSE	LOCATION	LEVEL	WEBSITE
Accounting Technician Apprenticeship	Morrison's Island Campus	Year 1	<a href="http://www.morrisonsislandcampus.ie">www.morrisonsislandcampus.ie</a>
Accounting Technician Apprenticeship	Morrison's Island Campus	Year 2	<a href="http://www.morrisonsislandcampus.ie">www.morrisonsislandcampus.ie</a>
Auctioneering and Property Services Apprenticeship	Morrison's Island Campus	Year 1	<a href="http://www.morrisonsislandcampus.ie">www.morrisonsislandcampus.ie</a>
Auctioneering and Property Services Apprenticeship	Morrison's Island Campus	Year 2	<a href="http://www.morrisonsislandcampus.ie">www.morrisonsislandcampus.ie</a>
Online Accounting Technician Apprenticeship (Jan intake)	Morrison's Island Campus	Year 1	<a href="http://www.morrisonsislandcampus.ie">www.morrisonsislandcampus.ie</a>
Online Accounting Technician Apprenticeship (Jan intake)	Morrison's Island Campus	Year 2	<a href="http://www.morrisonsislandcampus.ie">www.morrisonsislandcampus.ie</a>
Hairdressing Apprenticeship	Mallow Campus	Level 6	<a href="http://www.mallowcampus.ie">www.mallowcampus.ie</a>
National Hairdressing Apprenticeship	Douglas Street Campus	Level 6	<a href="http://www.douglasstreetcampus.ie">www.douglasstreetcampus.ie</a>



# APPLIED SCIENCES



# ART, CRAFT & DESIGN



COURSE	LOCATION	LEVEL	WEBSITE
Animal Care - Canine Husbandry	Douglas Street Campus	Level 5	<a href="http://www.douglasstreetcampus.ie">www.douglasstreetcampus.ie</a>
Animal Care - Companion and Captive Animal Studies	Douglas Street Campus	Level 5	<a href="http://www.douglasstreetcampus.ie">www.douglasstreetcampus.ie</a>
Animal Care	Douglas Street Campus	Level 5	<a href="http://www.douglasstreetcampus.ie">www.douglasstreetcampus.ie</a>
Animal Science & Management - Animal Science	Douglas Street Campus	Level 6	<a href="http://www.douglasstreetcampus.ie">www.douglasstreetcampus.ie</a>
Pharmacy Assistant - Community and Health Services	Douglas Street Campus	Level 5	<a href="http://www.douglasstreetcampus.ie">www.douglasstreetcampus.ie</a>
Science & Laboratory Techniques - Laboratory Techniques	Douglas Street Campus	Level 5	<a href="http://www.douglasstreetcampus.ie">www.douglasstreetcampus.ie</a>
Science with Environmental Studies - Laboratory Techniques	Douglas Street Campus	Level 5	<a href="http://www.douglasstreetcampus.ie">www.douglasstreetcampus.ie</a>
Veterinary Nursing - Animal Care	Douglas Street Campus	Level 6	<a href="http://www.douglasstreetcampus.ie">www.douglasstreetcampus.ie</a>
Veterinary Nursing - Animal Science	Douglas Street Campus	Level 5	<a href="http://www.douglasstreetcampus.ie">www.douglasstreetcampus.ie</a>
Applied Biology - Food Science	Tramore Road Campus	Level 5	<a href="http://www.tramoreroadcampus.ie">www.tramoreroadcampus.ie</a>
Applied Science - Laboratory Techniques	Tramore Road Campus	Level 5	<a href="http://www.tramoreroadcampus.ie">www.tramoreroadcampus.ie</a>
Animal Care Assistant - Animal Care	Mallow Campus	Level 5	<a href="http://www.mallowcampus.ie">www.mallowcampus.ie</a>
Animal Science	Mallow Campus	Level 6	<a href="http://www.mallowcampus.ie">www.mallowcampus.ie</a>

COURSE	LOCATION	LEVEL	WEBSITE
Art, Craft & Design - Art	Douglas Street Campus	Level 5	<a href="http://www.douglasstreetcampus.ie">www.douglasstreetcampus.ie</a>
Cartoon Animation - Art	Douglas Street Campus	Level 5	<a href="http://www.douglasstreetcampus.ie">www.douglasstreetcampus.ie</a>
Creative Craft - Creative Craft	Douglas Street Campus	Level 5	<a href="http://www.douglasstreetcampus.ie">www.douglasstreetcampus.ie</a>
Creative Entrepreneurship - Design	Douglas Street Campus	Level 5	<a href="http://www.douglasstreetcampus.ie">www.douglasstreetcampus.ie</a>
Fashion Design - Fashion Design	Douglas Street Campus	Level 5	<a href="http://www.douglasstreetcampus.ie">www.douglasstreetcampus.ie</a>
Fashion Design - Fashion Design	Douglas Street Campus	Level 6	<a href="http://www.douglasstreetcampus.ie">www.douglasstreetcampus.ie</a>
Fashion Design & Media - Fashion Design	Douglas Street Campus	Level 5	<a href="http://www.douglasstreetcampus.ie">www.douglasstreetcampus.ie</a>
Fine Art - Painting & Sculpture - Art	Douglas Street Campus	Level 6	<a href="http://www.douglasstreetcampus.ie">www.douglasstreetcampus.ie</a>
Graphic Design & Illustration - Graphic Design	Douglas Street Campus	Level 5	<a href="http://www.douglasstreetcampus.ie">www.douglasstreetcampus.ie</a>
Interior Architecture & Design - Interior Design	Douglas Street Campus	Level 5	<a href="http://www.douglasstreetcampus.ie">www.douglasstreetcampus.ie</a>
Musical Instrument Making and Repair - Art	Douglas Street Campus	Level 5	<a href="http://www.douglasstreetcampus.ie">www.douglasstreetcampus.ie</a>
Musical Instrument Making and Repair - Creative Craft	Douglas Street Campus	Level 6	<a href="http://www.douglasstreetcampus.ie">www.douglasstreetcampus.ie</a>
Cartoon Animation - Cartoon Animation	Douglas Street Campus	Level 6	<a href="http://www.douglasstreetcampus.ie">www.douglasstreetcampus.ie</a>
Illustration - Illustration	Douglas Street Campus	Level 6	<a href="http://www.douglasstreetcampus.ie">www.douglasstreetcampus.ie</a>
Interior Architecture & Design - Interior Design - HNC	Douglas Street Campus	Level 6	<a href="http://www.douglasstreetcampus.ie">www.douglasstreetcampus.ie</a>
Interior Architecture Higher National Diploma - Interior Design - HND	Douglas Street Campus	Level 6	<a href="http://www.douglasstreetcampus.ie">www.douglasstreetcampus.ie</a>
Art 1 (Art, Craft & Design)	Tramore Road Campus	Level 5	<a href="http://www.tramoreroadcampus.ie">www.tramoreroadcampus.ie</a>
Art 2 (Art)	Tramore Road Campus	Level 6	<a href="http://www.tramoreroadcampus.ie">www.tramoreroadcampus.ie</a>
Portfolio Course (Art, Craft & Design)	Tramore Road Campus	Level 6	<a href="http://www.tramoreroadcampus.ie">www.tramoreroadcampus.ie</a>

COURSE	LOCATION	LEVEL	WEBSITE
Jewellery Making & Art Metalcraft - Creative Craft	Douglas Street Campus	Level 5	<a href="http://www.douglasstreetcampus.ie">www.douglasstreetcampus.ie</a>
Jewellery Making & Art Metalcraft - Creative Craft	Douglas Street Campus	Level 6	<a href="http://www.douglasstreetcampus.ie">www.douglasstreetcampus.ie</a>
Millinery Design - Creative Craft	Douglas Street Campus	Level 5	<a href="http://www.douglasstreetcampus.ie">www.douglasstreetcampus.ie</a>
Textile Design - Design	Douglas Street Campus	Level 5	<a href="http://www.douglasstreetcampus.ie">www.douglasstreetcampus.ie</a>
Portfolio - Art	Tramore Road Campus	Level 5	<a href="http://www.tramoreroadcampus.ie">www.tramoreroadcampus.ie</a>
Art 1 - Art, Craft & Design	Tramore Road Campus	Level 5	<a href="http://www.tramoreroadcampus.ie">www.tramoreroadcampus.ie</a>
Art 2 - Art	Tramore Road Campus	Level 6	<a href="http://www.tramoreroadcampus.ie">www.tramoreroadcampus.ie</a>
Art - Art, Craft & Design	West Cork Campus	Level 5	<a href="http://www.westcorkcampus.ie">www.westcorkcampus.ie</a>
Art 1 - Art, Craft & Design	Kinsale Campus	Level 5	<a href="http://www.kinsalecampus.ie">www.kinsalecampus.ie</a>
Art 2 - Art, Craft & Design	Kinsale Campus	Level 6	<a href="http://www.kinsalecampus.ie">www.kinsalecampus.ie</a>

# BUSINESS & ADMINISTRATION



COURSE	LOCATION	LEVEL	WEBSITE
Accounts Administrator (Business Administration)	Morrison's Island Campus	Level 5	<a href="http://www.morrisonsislandcampus.ie">www.morrisonsislandcampus.ie</a>
Business (Business Studies)	Morrison's Island Campus	Level 5	<a href="http://www.morrisonsislandcampus.ie">www.morrisonsislandcampus.ie</a>
English Language & IT Skills for International Students (Contact Centre Operations)	Morrison's Island Campus	Level 5	<a href="http://www.morrisonsislandcampus.ie">www.morrisonsislandcampus.ie</a>
Business with Entrepreneurship (Business Studies)	Morrison's Island Campus	Level 5	<a href="http://www.morrisonsislandcampus.ie">www.morrisonsislandcampus.ie</a>
Estate Agency Administrator (Business Administration)	Morrison's Island Campus	Level 5	<a href="http://www.morrisonsislandcampus.ie">www.morrisonsislandcampus.ie</a>
Business with Human Resources (Business Studies)	Morrison's Island Campus	Level 5	<a href="http://www.morrisonsislandcampus.ie">www.morrisonsislandcampus.ie</a>
Legal Administrator (Legal Studies)	Morrison's Island Campus	Level 5	<a href="http://www.morrisonsislandcampus.ie">www.morrisonsislandcampus.ie</a>
Business with Marketing (Marketing)	Morrison's Island Campus	Level 5	<a href="http://www.morrisonsislandcampus.ie">www.morrisonsislandcampus.ie</a>
Health Services Administrator	Morrison's Island Campus	Level 5	<a href="http://www.morrisonsislandcampus.ie">www.morrisonsislandcampus.ie</a>
Health Services Administrator	Morrison's Island Campus - Macroom Centre	Level 5	<a href="http://www.morrisonsislandcampus.ie/macroom-centre">www.morrisonsislandcampus.ie/macroom-centre</a>
Office Administrator (Business Administration)	Morrison's Island Campus	Level 5	<a href="http://www.morrisonsislandcampus.ie">www.morrisonsislandcampus.ie</a>
Security with Criminology (Security Studies)	Morrison's Island Campus	Level 5	<a href="http://www.morrisonsislandcampus.ie">www.morrisonsislandcampus.ie</a>
Business with Logistics (Business Studies)	Morrison's Island Campus	Level 5	<a href="http://www.morrisonsislandcampus.ie">www.morrisonsislandcampus.ie</a>
Advanced Business and Administration (Business)	Morrison's Island Campus	Level 6	<a href="http://www.morrisonsislandcampus.ie">www.morrisonsislandcampus.ie</a>
Advanced Business - Marketing Specialism (Business)	Morrison's Island Campus	Level 6	<a href="http://www.morrisonsislandcampus.ie">www.morrisonsislandcampus.ie</a>
Advanced Business - Legal Specialism (Business)	Morrison's Island Campus	Level 6	<a href="http://www.morrisonsislandcampus.ie">www.morrisonsislandcampus.ie</a>





COURSE	LOCATION	LEVEL	WEBSITE
Pre University Preparation (General Studies)	Morrison's Island Campus	Level 5	<a href="http://www.morrisonsislandcampus.ie">www.morrisonsislandcampus.ie</a>
Advanced Business with English Language Support (Business)	Morrison's Island Campus	Level 6	<a href="http://www.morrisonsislandcampus.ie">www.morrisonsislandcampus.ie</a>
Business with Accounting (Business Studies)	Morrison's Island Campus	Level 5	<a href="http://www.morrisonsislandcampus.ie">www.morrisonsislandcampus.ie</a>
Business with Farm Organisation (Business Administration)	Morrison's Island Campus	Level 5	<a href="http://www.morrisonsislandcampus.ie">www.morrisonsislandcampus.ie</a>
Business with Languages (Business Studies)	Morrison's Island Campus	Level 5	<a href="http://www.morrisonsislandcampus.ie">www.morrisonsislandcampus.ie</a>
Healthcare Security (Security Studies)	Morrison's Island Campus	Level 5	<a href="http://www.morrisonsislandcampus.ie">www.morrisonsislandcampus.ie</a>
FinTech - Finance for the Future (Business Studies)	Morrison's Island Campus	Level 5	<a href="http://www.morrisonsislandcampus.ie">www.morrisonsislandcampus.ie</a>
Data Management & Compliance (Information Processing)	Morrison's Island Campus	Level 5	<a href="http://www.morrisonsislandcampus.ie">www.morrisonsislandcampus.ie</a>
Education and Industry Training Skills (Education and Training)	Morrison's Island Campus	Level 5	<a href="http://www.morrisonsislandcampus.ie">www.morrisonsislandcampus.ie</a>
Office Administrator (Business Administration)	West Cork Campus	Level 5	<a href="http://www.westcorkcampus.ie">www.westcorkcampus.ie</a>
Office Administrator - Medical & Legal Specialism (Business Administration)	West Cork Campus	Level 5	<a href="http://www.westcorkcampus.ie">www.westcorkcampus.ie</a>
Security Studies (Security Studies)	Mallow Campus	Level 5	<a href="http://www.mallowcampus.ie">www.mallowcampus.ie</a>
Office Administrator (Business Administration)	Mallow Campus	Level 5	<a href="http://www.mallowcampus.ie">www.mallowcampus.ie</a>
Medical Office Administrator (Business Administration)	Mallow Campus	Level 5	<a href="http://www.mallowcampus.ie">www.mallowcampus.ie</a>
Liberal Arts (General Studies)	Mallow Campus	Level 5	<a href="http://www.mallowcampus.ie">www.mallowcampus.ie</a>
Business and Computers for Adults (Business Administration)	Mallow Campus	Level 5	<a href="http://www.mallowcampus.ie">www.mallowcampus.ie</a>
Business with English (Business Administration)	Mallow Campus	Level 5	<a href="http://www.mallowcampus.ie">www.mallowcampus.ie</a>
Digital Marketing Assistant (Marketing)	Mallow Campus	Level 5	<a href="http://www.mallowcampus.ie">www.mallowcampus.ie</a>
Contact Centre Operations (Contact Centre Operations)	Mallow Campus	Level 5	<a href="http://www.mallowcampus.ie">www.mallowcampus.ie</a>
Business Management (Business)	Mallow Campus	Level 6	<a href="http://www.mallowcampus.ie">www.mallowcampus.ie</a>
Administration Management (Administration)	Mallow Campus	Level 6	<a href="http://www.mallowcampus.ie">www.mallowcampus.ie</a>
Tourism with Business (Tourism with Business)	Mallow Campus	Level 5	<a href="http://www.mallowcampus.ie">www.mallowcampus.ie</a>
Business and Computers for Adults (Business Administration)	Mallow Campus - Charleville Centre	Level 5	<a href="http://www.mallowcampus.ie/charleville">www.mallowcampus.ie/charleville</a>
Secretarial Course (Business Administration)	Mallow Campus - Charleville Centre	Level 5	<a href="http://www.mallowcampus.ie/charleville">www.mallowcampus.ie/charleville</a>

COURSE	LOCATION	LEVEL	WEBSITE
Office Administration	Kinsale Campus	Level 5	<a href="http://www.kinsalecampus.ie">www.kinsalecampus.ie</a>
Business	Kinsale Campus	Level 6	<a href="http://www.kinsalecampus.ie">www.kinsalecampus.ie</a>
English as a Second Language (Contact Centre Operations)	Kinsale Campus	Level 5	<a href="http://www.kinsalecampus.ie">www.kinsalecampus.ie</a>
Business with Retail (Business Studies)	Morrison's Island - Macroom Centre	Level 5	<a href="http://www.morrisonsislandcampus.ie/macroom-centre">www.morrisonsislandcampus.ie/macroom-centre</a>
Office Administrator (Business Administration)	Morrison's Island - Macroom Centre	Level 5	<a href="http://www.morrisonsislandcampus.ie/macroom-centre">www.morrisonsislandcampus.ie/macroom-centre</a>
Office Administrator (Business Studies)	Morrison's Island - Youghal Campus	Level 5	<a href="http://www.youghalcampus.ie">www.youghalcampus.ie</a>

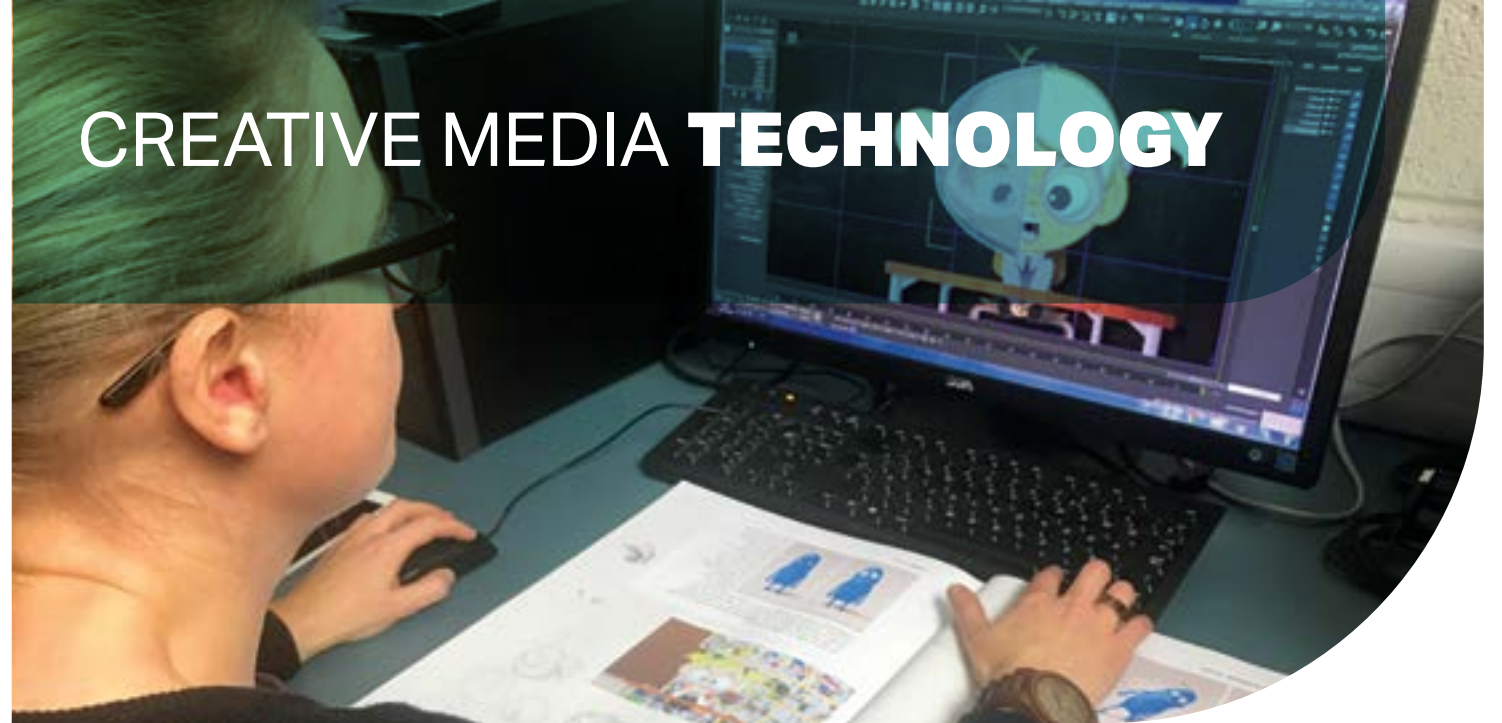




# COMPUTER SCIENCE & INFORMATION



# CREATIVE MEDIA TECHNOLOGY



COURSE	LOCATION	LEVEL	WEBSITE
Networks & Cyber Security (Computer Systems and Networks)	Douglas Street Campus	Level 5	<a href="http://www.douglasstreetcampus.ie">www.douglasstreetcampus.ie</a>
Networks & Cyber Security (Computer Systems and Networks)	Douglas Street Campus	Level 6	<a href="http://www.douglasstreetcampus.ie">www.douglasstreetcampus.ie</a>
Computer Science (Computer Systems and Networks)	Morrison's Island Campus	Level 5	<a href="http://www.morrisonislandcampus.ie">www.morrisonislandcampus.ie</a>
IT Tech Support (Computer Systems and Networks)	Morrison's Island Campus	Level 5	<a href="http://www.morrisonislandcampus.ie">www.morrisonislandcampus.ie</a>
FIT-IT Maintenance and Support (Computer Systems and Networks)	Morrison's Island Campus	Level 5	<a href="http://www.morrisonislandcampus.ie">www.morrisonislandcampus.ie</a>
Software Development (Software Development)	Morrison's Island Campus	Level 5	<a href="http://www.morrisonislandcampus.ie">www.morrisonislandcampus.ie</a>
Advanced Software Development (Software Development)	Morrison's Island Campus	Level 6	<a href="http://www.morrisonislandcampus.ie">www.morrisonislandcampus.ie</a>
UX APP Development (Software Development)	Morrison's Island Campus	Level 5	<a href="http://www.morrisonislandcampus.ie">www.morrisonislandcampus.ie</a>
Network Administrator (Computer Systems & Networks)	Mallow Campus	Level 5	<a href="http://www.mallowcampus.ie">www.mallowcampus.ie</a>

COURSE	LOCATION	LEVEL	WEBSITE
Content Creation in an AI World	Douglas Street Campus	Level 5	<a href="http://www.douglasstreetcampus.ie">www.douglasstreetcampus.ie</a>
Creative Digital Media (Multimedia Production)	Douglas Street Campus	Level 5	<a href="http://www.douglasstreetcampus.ie">www.douglasstreetcampus.ie</a>
Creative Digital Media (Digital Media Production)	Douglas Street Campus	Level 6	<a href="http://www.douglasstreetcampus.ie">www.douglasstreetcampus.ie</a>
Film, TV & Video Production (TV & Film Production)	Douglas Street Campus	Level 5	<a href="http://www.douglasstreetcampus.ie">www.douglasstreetcampus.ie</a>
Film, TV & Video Production (Film & TV Production)	Douglas Street Campus	Level 6	<a href="http://www.douglasstreetcampus.ie">www.douglasstreetcampus.ie</a>
Immersive Art & Installation	Douglas Street Campus	Level 5	<a href="http://www.douglasstreetcampus.ie">www.douglasstreetcampus.ie</a>
New Pathways (General Studies)	Douglas Street Campus	Level 5	<a href="http://www.douglasstreetcampus.ie">www.douglasstreetcampus.ie</a>
Photographic Studies (Photography)	Douglas Street Campus	Level 5	<a href="http://www.douglasstreetcampus.ie">www.douglasstreetcampus.ie</a>
Photographic Studies (Photography)	Douglas Street Campus	Level 6	<a href="http://www.douglasstreetcampus.ie">www.douglasstreetcampus.ie</a>
Soundtracks & Sound Design (Sound Production)	Douglas Street Campus	Level 5	<a href="http://www.douglasstreetcampus.ie">www.douglasstreetcampus.ie</a>
Motion Graphics, 3D and Visual Effects (Year 1)	Douglas Street Campus	BTEC	<a href="http://www.douglasstreetcampus.ie">www.douglasstreetcampus.ie</a>
Motion Graphics, 3D and Visual Effects (Year 2)	Douglas Street Campus	BTEC	<a href="http://www.douglasstreetcampus.ie">www.douglasstreetcampus.ie</a>
Journalism for the Digital Age (Journalism)	Douglas Street Campus	Level 5	<a href="http://www.douglasstreetcampus.ie">www.douglasstreetcampus.ie</a>
Film, TV & Content Creation (Film & TV Production)	Kinsale Campus	Level 5	<a href="http://www.kinsalecampus.ie">www.kinsalecampus.ie</a>
Film, TV & Content Creation (Film & TV Production)	Kinsale Campus	Level 6	<a href="http://www.kinsalecampus.ie">www.kinsalecampus.ie</a>
Computer Game Design & Development (Multimedia Production)	Douglas Street Campus	Level 5	<a href="http://www.douglasstreetcampus.ie">www.douglasstreetcampus.ie</a>
Computer Game Design & Development (Digital Media Production)	Douglas Street Campus	Level 6	<a href="http://www.douglasstreetcampus.ie">www.douglasstreetcampus.ie</a>





# ENGINEERING & CONSTRUCTION



# ENVIRONMENT & HORTICULTURE



COURSE	LOCATION	LEVEL	WEBSITE
Engineering Technology (Engineering Technology)	Douglas Street Campus	Level 5	<a href="http://www.douglasstreetcampus.ie">www.douglasstreetcampus.ie</a>
Motor Maintenance & Light Engineering (Motor Technology)	Douglas Street Campus	Level 5	<a href="http://www.douglasstreetcampus.ie">www.douglasstreetcampus.ie</a>
Architectural 3D Modeling (BIM/Revit) (Computer Aided Design)	Tramore Road Campus	Level 5	<a href="http://www.tramoreroadcampus.ie">www.tramoreroadcampus.ie</a>
Carpentry (Construction Technology)	Tramore Road Campus	Level 5	<a href="http://www.tramoreroadcampus.ie">www.tramoreroadcampus.ie</a>
Furniture Design & Making 1 Furniture Design & Making	Tramore Road Campus	Level 5	<a href="http://www.tramoreroadcampus.ie">www.tramoreroadcampus.ie</a>
Furniture Design & Making (Furniture Design & Making)	Tramore Road Campus	Level 6	<a href="http://www.tramoreroadcampus.ie">www.tramoreroadcampus.ie</a>
EcoFab: Digital Fabrication	Tramore Road Campus	Level 5	<a href="http://www.tramoreroadcampus.ie">www.tramoreroadcampus.ie</a>
Furniture Making & Restoration Skills - Furniture Design & Making	Tramore Road Campus	Level 5	<a href="http://www.tramoreroadcampus.ie">www.tramoreroadcampus.ie</a>
Geospatial Technology	Tramore Road Campus	Level 5	<a href="http://www.tramoreroadcampus.ie">www.tramoreroadcampus.ie</a>

COURSE	LOCATION	LEVEL	WEBSITE
Horticulture 1 (Horticulture)	Tramore Road Campus	Level 5	<a href="http://www.tramoreroadcampus.ie">www.tramoreroadcampus.ie</a>
Horticulture 2 (Horticulture)	Tramore Road Campus	Level 6	<a href="http://www.tramoreroadcampus.ie">www.tramoreroadcampus.ie</a>
Greenkeeping & Sports Turf Management (Golf & Sports Turf Management)	Tramore Road Campus	Level 6	<a href="http://www.tramoreroadcampus.ie">www.tramoreroadcampus.ie</a>
Ecology and Environmental Sustainability	Tramore Road Campus	Level 5	<a href="http://www.tramoreroadcampus.ie">www.tramoreroadcampus.ie</a>
Horticulture (Horticulture)	West Cork Campus	Level 5	<a href="http://www.westcorkcampus.ie">www.westcorkcampus.ie</a>
Sustainable Horticulture/Permaculture (Horticulture)	Kinsale Campus	Level 5	<a href="http://www.kinsalecampus.ie">www.kinsalecampus.ie</a>
Sustainable Horticulture/Permaculture (Horticulture)	Kinsale Campus	Level 6	<a href="http://www.kinsalecampus.ie">www.kinsalecampus.ie</a>
Horticulture (Horticulture)	Mallow Campus - Charleville Centre	Level 5	<a href="http://www.mallowcampus.ie/charleville">www.mallowcampus.ie/charleville</a>
Culture & Heritage Studies (Culture & Heritage Studies)	Tramore Road Campus	Level 5	<a href="http://www.tramoreroadcampus.ie">www.tramoreroadcampus.ie</a>





# HAIR, BEAUTY & COMPLEMENTARY THERAPIES



# HEALTH, CHILDREN & SOCIAL STUDIES



COURSE	LOCATION	LEVEL	WEBSITE
Barbering, Beauty & Salon Management (Business)	Douglas Street Campus	Level 6	<a href="http://www.douglasstreetcampus.ie">www.douglasstreetcampus.ie</a>
Hairdressing & Barbering (Hairdressing)	Douglas Street Campus	Level 5	<a href="http://www.douglasstreetcampus.ie">www.douglasstreetcampus.ie</a>
Make-Up Artistry with Fashion, Theatrical & SFX	Douglas Street Campus	Level 5	<a href="http://www.douglasstreetcampus.ie">www.douglasstreetcampus.ie</a>
Pre Apprenticeship - Hairdressing (Hairdressing)	Douglas Street Campus	Level 5	<a href="http://www.douglasstreetcampus.ie">www.douglasstreetcampus.ie</a>
Professional Make-Up & Hair Styling	Douglas Street Campus	Level 5	<a href="http://www.douglasstreetcampus.ie">www.douglasstreetcampus.ie</a>
Beauty & Body Therapy (Beauty & Body Therapy)	Morrison's Island Campus	Level 5	<a href="http://www.morrisonislandcampus.ie">www.morrisonislandcampus.ie</a>
CIDESCO Beauty Therapy Diploma	Morrison's Island Campus	CIDESCO Diploma	<a href="http://www.morrisonislandcampus.ie">www.morrisonislandcampus.ie</a>
Holistic Therapies	Morrison's Island Campus	ITEC L3	<a href="http://www.morrisonislandcampus.ie">www.morrisonislandcampus.ie</a>
Nail Technology with Nail Art	Douglas Street Campus	Level 5	<a href="http://www.douglasstreetcampus.ie">www.douglasstreetcampus.ie</a>
Make-Up Artistry (Make-Up Artistry)	Douglas Street Campus	Level 6	<a href="http://www.douglasstreetcampus.ie">www.douglasstreetcampus.ie</a>
Hairdressing (Hairdressing)	West Cork Campus	Level 5	<a href="http://www.westcorkcampus.ie">www.westcorkcampus.ie</a>
Beauty & Spa Therapist (ITEC)	Mallow Campus	ITEC L2 & L3	<a href="http://www.mallowcampus.ie">www.mallowcampus.ie</a>
Hairdressing with Barbering (Hairdressing)	Mallow Campus	Level 5	<a href="http://www.mallowcampus.ie">www.mallowcampus.ie</a>
Pre-Apprenticeship Hairdressing	Mallow Campus	Level 5	<a href="http://www.mallowcampus.ie">www.mallowcampus.ie</a>
Nail Technology with Make-Up (ITEC)	Mallow Campus - Charleville Centre	Level 5	<a href="http://www.mallowcampus.ie/charleville">www.mallowcampus.ie/charleville</a>

COURSE	LOCATION	LEVEL	WEBSITE
Emergency Services (Community Health Services)	Tramore Road Campus	Level 5	<a href="http://www.tramoreroadcampus.ie">www.tramoreroadcampus.ie</a>
Healthcare Assistant (Health Services Skills)	Morrison's Island Campus	Level 5	<a href="http://www.morrisonislandcampus.ie">www.morrisonislandcampus.ie</a>
Healthcare Assistant with English Language Support (Health Services Skills)	Morrison's Island Campus	Level 5	<a href="http://www.morrisonislandcampus.ie">www.morrisonislandcampus.ie</a>
Nursery Nursing Studies (Nursing Studies)	Morrison's Island Campus	Level 5	<a href="http://www.morrisonislandcampus.ie">www.morrisonislandcampus.ie</a>
Nursing Studies (Nursing Studies)	Morrison's Island Campus	Level 5	<a href="http://www.morrisonislandcampus.ie">www.morrisonislandcampus.ie</a>
Special Needs Support (Intellectual Disability Practice)	Morrison's Island Campus	Level 5	<a href="http://www.morrisonislandcampus.ie">www.morrisonislandcampus.ie</a>
Applied Psychology (Applied Social Studies)	Morrison's Island Campus	Level 5	<a href="http://www.morrisonislandcampus.ie">www.morrisonislandcampus.ie</a>
Applied Social Studies with Psychology (Applied Social Studies)	Morrison's Island Campus	Level 5	<a href="http://www.morrisonislandcampus.ie">www.morrisonislandcampus.ie</a>
Youth Work with Criminology (Youth Work)	Morrison's Island Campus	Level 5	<a href="http://www.morrisonislandcampus.ie">www.morrisonislandcampus.ie</a>
Advanced Health & Social Care (Health Services Supervisory Management)	Morrison's Island Campus	Level 6	<a href="http://www.morrisonislandcampus.ie">www.morrisonislandcampus.ie</a>
Advanced Psychosocial Awareness (Inclusive Education and Training)	Morrison's Island Campus	Level 6	<a href="http://www.morrisonislandcampus.ie">www.morrisonislandcampus.ie</a>
Occupational Therapy Assistant (Health Services Skills)	Morrison's Island Campus	Level 5	<a href="http://www.morrisonislandcampus.ie">www.morrisonislandcampus.ie</a>
Physiotherapy Assistant (Health Services Skills)	Morrison's Island Campus	Level 5	<a href="http://www.morrisonislandcampus.ie">www.morrisonislandcampus.ie</a>
Advanced Health & Social Care with English Language Support (Health Services Supervisory Management)	Morrison's Island Campus	Level 6	<a href="http://www.morrisonislandcampus.ie">www.morrisonislandcampus.ie</a>
GP Practice Assistant (Nursing Studies)	Morrison's Island Campus	Level 5	<a href="http://www.morrisonislandcampus.ie">www.morrisonislandcampus.ie</a>



COURSE	LOCATION	LEVEL	WEBSITE
Healthcare Assistant (Health Services Skills)	West Cork Campus	Level 5	<a href="http://www.westcorkcampus.ie">www.westcorkcampus.ie</a>
Nursing Studies (Nursing Studies)	West Cork Campus	Level 5	<a href="http://www.westcorkcampus.ie">www.westcorkcampus.ie</a>
Psychology and Social Studies (Applied Social Studies)	West Cork Campus	Level 5	<a href="http://www.westcorkcampus.ie">www.westcorkcampus.ie</a>
Special Needs Assistant (Community Health Services)	West Cork Campus	Level 5	<a href="http://www.westcorkcampus.ie">www.westcorkcampus.ie</a>
Physiotherapy Assistant (Health Services Skills)	West Cork Campus	Level 5	<a href="http://www.westcorkcampus.ie">www.westcorkcampus.ie</a>
Nursing Studies	Mallow Campus	Level 5	<a href="http://www.mallowcampus.ie">www.mallowcampus.ie</a>
Healthcare Assistant (Healthcare Support)	Mallow Campus	Level 5	<a href="http://www.mallowcampus.ie">www.mallowcampus.ie</a>
Pre-Paramedic with Healthcare (Healthcare Support)	Mallow Campus	Level 5	<a href="http://www.mallowcampus.ie">www.mallowcampus.ie</a>
Youthwork	Mallow Campus	Level 5	<a href="http://www.mallowcampus.ie">www.mallowcampus.ie</a>
Applied Special Studies	Mallow Campus	Level 5	<a href="http://www.mallowcampus.ie">www.mallowcampus.ie</a>
Special Needs Assistant (Community Health Services)	Mallow Campus - Charleville Centre	Level 5	<a href="http://www.mallowcampus.ie/charleville">www.mallowcampus.ie/charleville</a>
Applied Social Studies	Mallow Campus - Charleville Centre	Level 5	<a href="http://www.mallowcampus.ie/charleville">www.mallowcampus.ie/charleville</a>
Healthcare Assistant (Healthcare Support)	Mallow Campus - Charleville Centre	Level 5	<a href="http://www.mallowcampus.ie/charleville">www.mallowcampus.ie/charleville</a>
Nursing Studies	Mallow Campus - Charleville Centre	Level 5	<a href="http://www.mallowcampus.ie/charleville">www.mallowcampus.ie/charleville</a>
Healthcare (Healthcare Support)	Kinsale Campus	Level 5	<a href="http://www.kinsalecampus.ie">www.kinsalecampus.ie</a>
Nursing Studies (Healthcare Support)	Kinsale Campus	Level 5	<a href="http://www.kinsalecampus.ie">www.kinsalecampus.ie</a>
Healthcare Assistant (Health Service Skills)	Morrison's Island - Macroom Centre	Level 5	<a href="http://www.morrisonsislandcampus.ie/macroom-centre">www.morrisonsislandcampus.ie/macroom-centre</a>
Nursing Studies (Nursing Studies)	Morrison's Island - Macroom Centre	Level 5	<a href="http://www.morrisonsislandcampus.ie/macroom-centre">www.morrisonsislandcampus.ie/macroom-centre</a>
Healthcare Assistant (Health Service Skills)	Morrison's Island - Youghal Campus	Level 5	<a href="http://www.youghalcampus.ie">www.youghalcampus.ie</a>
Early Learning and Care, Advanced Certificate Stage 1	Morrison's Island Campus	Level 5	<a href="http://www.morrisonsislandcampus.ie">www.morrisonsislandcampus.ie</a>
Early Learning and Care, Advanced Certificate Stage 2	Morrison's Island Campus	Level 5	<a href="http://www.morrisonsislandcampus.ie">www.morrisonsislandcampus.ie</a>
Early Learning and Care, Advanced Certificate Stage 1 with Special Needs	Morrison's Island Campus	Level 5	<a href="http://www.morrisonsislandcampus.ie">www.morrisonsislandcampus.ie</a>
Early Learning and Care, Advanced Certificate Stage 2 with Special Needs	West Cork Campus	Level 5	<a href="http://www.westcorkcampus.ie">www.westcorkcampus.ie</a>

COURSE	LOCATION	LEVEL	WEBSITE
Early Learning and Care, Advanced Certificate Stage 1 with Special Needs	Mallow Campus	Level 5	<a href="http://www.mallowcampus.ie">www.mallowcampus.ie</a>
Stage 2 Advanced Certificate in Early Learning & Care with Special Needs	Mallow Campus	Level 6	<a href="http://www.mallowcampus.ie">www.mallowcampus.ie</a>
Disability & SNA Studies (Health Services Supervisory Management Skills)	Kinsale Campus	Level 6	<a href="http://www.kinsalecampus.ie">www.kinsalecampus.ie</a>
Early Learning and Care Advanced Certificate Stage 1	Kinsale Campus	Level 5	<a href="http://www.kinsalecampus.ie">www.kinsalecampus.ie</a>
Early Learning and Care Advanced Certificate Stage 2	Kinsale Campus	Level 6	<a href="http://www.kinsalecampus.ie">www.kinsalecampus.ie</a>
Early Learning and Care, Advanced Certificate Stage 1 with Special Needs	Morrison's Island - Youghal Campus	Level 5	<a href="http://www.youghalcampus.ie">www.youghalcampus.ie</a>
Pre University Preparation (General Studies)	Morrison's Island Campus	Level 5	<a href="http://www.morrisonsislandcampus.ie">www.morrisonsislandcampus.ie</a>





# PERFORMING ARTS



# SPORTS, RECREATION & OUTDOOR EDUCATION



COURSE	LOCATION	LEVEL	WEBSITE
Acting for Stage & Screen (Performing Arts)	Tramore Road Campus	Level 5	<a href="http://www.tramoreroadcampus.ie">www.tramoreroadcampus.ie</a>
Acting	Tramore Road Campus	Level 6	<a href="http://www.tramoreroadcampus.ie">www.tramoreroadcampus.ie</a>
Dance 1 (Dance)	Tramore Road Campus	Level 5	<a href="http://www.tramoreroadcampus.ie">www.tramoreroadcampus.ie</a>
Music, Management and Sound 1 (Music)	Tramore Road Campus	Level 5	<a href="http://www.tramoreroadcampus.ie">www.tramoreroadcampus.ie</a>
Music, Management and Sound 2 (Music)	Tramore Road Campus	Level 5	<a href="http://www.tramoreroadcampus.ie">www.tramoreroadcampus.ie</a>
Radio and Podcasting 1 (Radio Production)	Tramore Road Campus	Level 5	<a href="http://www.tramoreroadcampus.ie">www.tramoreroadcampus.ie</a>
Radio and Podcasting 2 / Advanced (Media Production)	Tramore Road Campus	Level 6	<a href="http://www.tramoreroadcampus.ie">www.tramoreroadcampus.ie</a>
Traditional Irish Music	Tramore Road Campus	Level 5	<a href="http://www.tramoreroadcampus.ie">www.tramoreroadcampus.ie</a>
Creative Drama and Theatre Arts (Theatre Performance)	Kinsale Campus	Level 5	<a href="http://www.kinsalecampus.ie">www.kinsalecampus.ie</a>
Drama	Kinsale Campus	Level 6	<a href="http://www.kinsalecampus.ie">www.kinsalecampus.ie</a>



COURSE	LOCATION	LEVEL	WEBSITE
Coaching & Physical Education (Sports, Recreation & Exercise)	Tramore Road Campus	Level 5	<a href="http://www.tramoreroadcampus.ie">www.tramoreroadcampus.ie</a>
Coaching & Physical Education (Sports, Recreation & Exercise)	Tramore Road Campus	Level 6	<a href="http://www.tramoreroadcampus.ie">www.tramoreroadcampus.ie</a>
Equestrian Studies (Horsemanship)	Tramore Road Campus	Level 5	<a href="http://www.tramoreroadcampus.ie">www.tramoreroadcampus.ie</a>
Advanced Equestrian Studies	Tramore Road Campus	Level 6	<a href="http://www.tramoreroadcampus.ie">www.tramoreroadcampus.ie</a>
Leisure & Recreation with Gym Instruction (Sports, Recreation & Exercise)	Tramore Road Campus	Level 5	<a href="http://www.tramoreroadcampus.ie">www.tramoreroadcampus.ie</a>
Leisure & Recreation and Personal Training (Leisure facility Supervisory management)	Tramore Road Campus	Level 6	<a href="http://www.tramoreroadcampus.ie">www.tramoreroadcampus.ie</a>
Soccer Coaching & Education (Sports, Recreation & Exercise)	Tramore Road Campus	Level 5	<a href="http://www.tramoreroadcampus.ie">www.tramoreroadcampus.ie</a>
Sports Rehabilitation with Diploma in Massage (Sports, Recreation & Exercise)	Tramore Road Campus	Level 5	<a href="http://www.tramoreroadcampus.ie">www.tramoreroadcampus.ie</a>
Exercise Performance with Personal Training or Sports Massage	Tramore Road Campus	Level 6	<a href="http://www.tramoreroadcampus.ie">www.tramoreroadcampus.ie</a>
Personal Training (iTEC)	Mallow Campus - Charleville Centre	Level 5	<a href="http://www.mallowcampus.ie/charleville">www.mallowcampus.ie/charleville</a>
Outdoor Adventure Education	Kinsale Campus	Level 5	<a href="http://www.kinsalecampus.ie">www.kinsalecampus.ie</a>
Outdoor Leadership	Kinsale Campus	Level 6	<a href="http://www.kinsalecampus.ie">www.kinsalecampus.ie</a>



# TOURISM & HOSPITALITY



COURSE	LOCATION	LEVEL	WEBSITE
Hospitality Studies (Hospitality Operations)	Morrison's Island Campus	Level 5	<a href="http://www.morrisonislandcampus.ie">www.morrisonislandcampus.ie</a>
International Airline Studies (Tourism with Business)	Morrison's Island Campus	Level 5	<a href="http://www.morrisonislandcampus.ie">www.morrisonislandcampus.ie</a>
Professional Cookery (Professional Cookery)	Morrison's Island Campus	Level 5	<a href="http://www.morrisonislandcampus.ie">www.morrisonislandcampus.ie</a>
Travel & Tourism (Tourism with Business)	Morrison's Island Campus	Level 5	<a href="http://www.morrisonislandcampus.ie">www.morrisonislandcampus.ie</a>
Professional Cookery	Kinsale Campus	Level 5	<a href="http://www.kinsalecampus.ie">www.kinsalecampus.ie</a>







**cetb**

Bord Oideachais agus  
Oiliúna Chorcaí  
*Cork Education and  
Training Board*



Visit **[www.corketb.ie/fet](http://www.corketb.ie/fet)**

*A Pathway for Every Learner*



Rialtas na hÉireann  
Government of Ireland



Arna chomhchistiú ag  
an Aontas Eorpach  
Co-Funded by the  
European Union



QQI  
Quality and Qualifications Ireland  
Dearbhú Cáilíochta agus Cáilíochtaí Éireann

**SOLAS**  
learning works

The project is co-funded by the Government of Ireland and the European Union.